

1

2

3

4

5

6

7

8

9

10

90199-B-8001

SHT.01

THIS DOCUMENT HAS BEEN CREATED USING AutoCAD AND MUST ONLY BE UPDATED BY PROJECT ENGINEERING, POOLE (UK)

THIS DRAWING IS CONFIDENTIAL. IT IS THE PROPERTY OF LIFE SAFETY DISTRIBUTION AG (HONEYWELL ANALYTICS) & MUST NOT BE REPRODUCED EITHER WHOLLY OR PARTLY. ALL RIGHTS IN RESPECT OF PATENTS, DESIGNS & COPYRIGHT ARE RESERVED.

SEARCHLINE RECEIVER

SEARCHLINE TRANSMITTER

XNX TRANSMITTER

DETAIL OF TYPICAL TAG LABEL

ITEMS LIST

NOTE: ITEMS 1 TO 11 SUPPLIED AS KIT REF. 02104-N-XSSA

1. 2104B2111

SEARCHLINE EXCEL SHORT RANGE RECEIVER  
ATEX: Ex d IIC T5 (-40°C to +65°C),  
II 2 G T6 (-40°C to + 40°C)  
CERT No.: BASEEFA No.98ATEX2165X, IECEx BAS 09.0100X  
CURRENT: 4-20 mA SOURCE  
POWER CONSUMPTION: Vmax=32Vdc Pmax=10W  
INGRESS PROTECTION: IP67  
MATERIAL/FINISH: 316 STAINLESS STEEL, ELECTRO-POLISHED  
WEIGHT- 3.5kg

2. 2104B2301

MOUNTING BRACKET FOR SHORT/MEDIUM RANGE  
MATERIAL/FINISH: 316 STAINLESS STEEL. ELECTRO-POLISHED  
WEIGHT- 1.3kg

3. XNX-AMSI-NHNNN

XNX UNIVERSAL TRANSMITTER  
ATEX: Ex II 2(1) G, Exd[Ia IIC Ga] IIB+H2 T4 Gb (-40°C to +65°C)  
CERT No.: DEMKO 09 ATEX 0809943X IECEx UL 09.0010X  
HART OVER 4-20mA OUTPUT, LOCAL HART SOCKET  
INGRESS PROTECTION: IP66  
MATERIAL: 316 STAINLESS STEEL  
FINISH: 5 COAT MARINE PAINT YELLOW RAL-1023  
CABLE ENTRIES: 4 x M25 (BLANKING PLUGS SUPPLIED)  
WEIGHT- 5kg

4. 2104B2071

SEARCHLINE EXCEL SHORT RANGE TRANSMITTER  
ATEX: EEx d IIC T5 (-40°C to +65°C) T6 (-40°C to +40°C)  
CERT No.: BASEEFA No.03ATEX2165X  
INGRESS PROTECTION: IP67  
MATERIAL/FINISH: 316 STAINLESS STEEL, ELECTRO-POLISHED,  
WEIGHT- 7kg

5. 00780-A-0100

OTB 122 JUNCTION BOX (BARTEC)  
ATEX: Ex II 2GD, Ex e ID A21 T85°C  
EExe II T6(-20°C TO +65°C)  
CERT No.: BASEEFA No. 07ATEX0142X, IECEx BAS 07.0034X  
INGRESS PROTECTION: IP66  
CABLE ENTRIES: 1 x M25, 3 x M25,  
(BLANKING PLUGS SUPPLIED)  
MATERIAL: POLYESTER, BLACK  
WEIGHT: 1.02KG

6. FLEXIBLE CONDUIT

SUPPLIED ASSEMBLED TO RECEIVER/TRANSMITTER  
INGRESS PROTECTION: IP66,  
CONDUIT MATERIAL: GALVANIZED STEEL CORE WITH ENHANCED OIL  
RESISTANT PVC COVERING  
TEMP. RANGE: -40°C to +105°C  
CABLE GLAND TYPE: M20 BARRIER GLAND  
ATEX: Ex IIC G D, -80°C to +80°C  
CERT No.: BASEEFA 09ATEX1231X, IECEx SIRA09.0103X  
INGRESS PROTECTION: IP66  
GLAND MATERIAL: BRASS WITH NYLON SEAL & EPOXY RESIN.

7. 2104D0237

MOUNTING PLATE FOR SEARCHLINE EXCEL  
THICKNESS: 6mm  
MATERIAL: 316 STAINLESS STEEL  
WEIGHT - 3.8kg

8. -

NYLON SEALING WASHER  
(SUPPLIED WITH CONDUIT ITEM 6)

9. 90084-C-7013

TAG LABEL  
MATERIAL: 316 STAINLESS STEEL

10. 2104B2304

XNX MOUNTING KIT BOLTS

11. RDU300504

M25(M) TO M20(F) ATEX CERTIFIED REDUCER  
MATERIAL: 316 STAINLESS STEEL

NOTES:

1. INSTALLATION TO BE CARRIED OUT IN CONJUNCTION WITH THE OPERATING INSTRUCTION MANUAL - 2104M0506 SEARCHLINE EXCEL TECHNICAL HANDBOOK LOCATED ON THE OPTICAL PRODUCTS CD - 2108M0520. FOR XNX UNIVERSAL TRANSMITTER INSTALLATION REFER TO XNX MANUAL RELEASE 1 3/09.

2. ALL DIMENSIONS ARE TYPICAL AND ARE IN MILLIMETERS.

3. UNITS SUPPLIED LOOSE, TO BE ASSEMBLED AT SITE.

BP EXPLORATION CO LTD.  
ORDER No. 647197-01  
F041G7001-I-MR-063-000  
OP GAS DETECTORS

|       |            |       |                       |  |  |          |          |
|-------|------------|-------|-----------------------|--|--|----------|----------|
|       |            |       |                       |  |  |          |          |
|       |            |       |                       |  |  |          |          |
|       |            |       |                       |  |  |          |          |
| A     | 10/07/2013 | ADJ   | ORIGINAL ISSUE        |  |  | RL       | KW       |
| ISSUE | DATE       | DRAWN | DESCRIPTION OF CHANGE |  |  | CHK'D BY | APP'D BY |

TITLE

OUTLINE INSTALLATION DETAIL  
WALL MOUNT SEARCHLINE EXCEL SHORT  
RANGE WITH REMOTE XNX TRANSMITTER

SCALE

NTS

DWG No

90199-B-8001

SHT. 01

OF 02

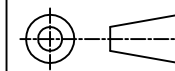
AutoCAD FILE NAME: S:\90199\B\8000\8001S1A.dwg

SALES ORDER No: 5398504

A3

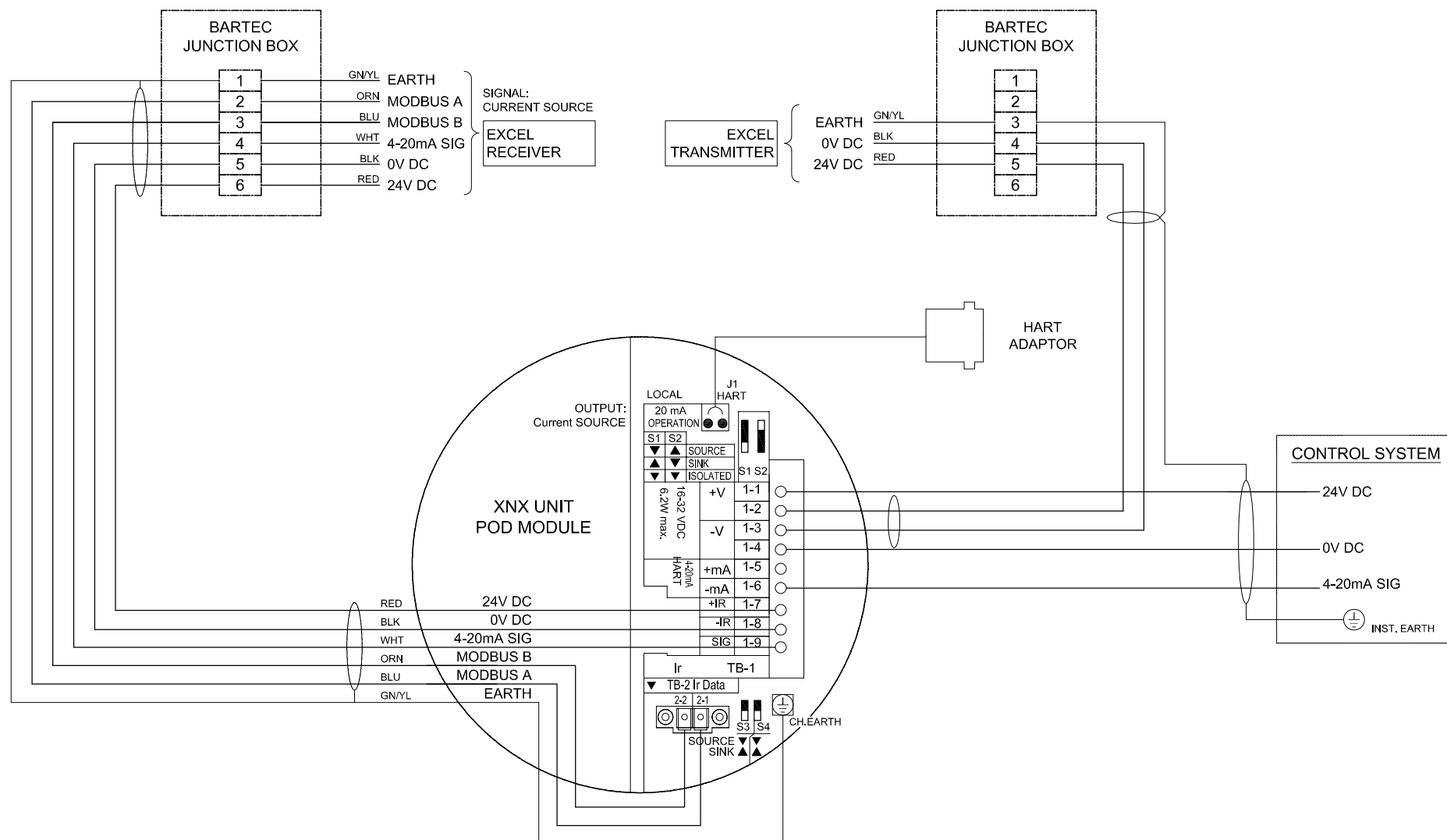
THIS DOCUMENT HAS BEEN CREATED USING AutoCAD AND  
MUST ONLY BE UPDATED BY PROJECT ENGINEERING, POOLE (UK)

THIS DRAWING IS CONFIDENTIAL. IT IS THE PROPERTY OF LIFE SAFETY DISTRIBUTION AG (HONEYWELL ANALYTICS) & MUST NOT BE REPRODUCED EITHER WHOLLY OR PARTLY. ALL RIGHTS IN RESPECT OF PATENTS, DESIGNS & COPYRIGHT ARE RESERVED.



# Honeywell

**TERMINAL CONNECTION DETAIL**  
FOR INSTALLATION INSTRUCTIONS SEE NOTE 1



## Wood Group Engineering (North Sea) Ltd.

| Contract | Purchase Order | S.D.R.I. Code | Sequence No. | WGE Ref |
|----------|----------------|---------------|--------------|---------|
| 37AND    |                |               |              |         |

**1**

**ACCEPTED:**  
As Final Certified

**2**

**ACCEPTED: Work May Proceed.**  
Incorporate Comments & Re-Submit

**3**

**REJECTED: Work May Not Proceed.**  
Revise And Re-Submit

**4**

**ACCEPTED:**  
For Information Only

Acceptance does not relieve the Supplier/Sub-Contractor of any contracted responsibility of the correctness or quality of work warrant and guarantees noted or implied in the order.

Comments may not do imply acceptance of any cost or delivery impact

| WGE Dept. | Print Name | Sign | Date |
|-----------|------------|------|------|
|           |            |      |      |

NOTES:

1. INSTALLATION TO BE CARRIED OUT IN CONJUNCTION WITH THE OPERATING INSTRUCTION MANUAL - 2104M0506 SEARCHLINE EXCEL TECHNICAL HANDBOOK LOCATED ON THE OPTICAL PRODUCTS CD - 2108M0520. FOR XNX UNIVERSAL TRANSMITTER INSTALLATION REFER TO XNX MANUAL RELEASE 1 3/09.
2. ON XNX TRANSMITTER, ALL SLIDER SWITCHES MUST NOT BE OPERATED WHILST THE POWER IS ON. THIS WILL CAUSE DAMAGE TO THE POD MODULE.
3. EARTH AND/OR CABLE SCREEN TO BE TERMINATED TO INSTRUMENT/CLEAN EARTH AT ONE END ONLY. ALWAYS ENSURE NO EARTH LOOPS ARE FORMED.

BP EXPLORATION CO LTD.  
ORDER No. 647197-01  
F041G7001-I-MR-063-000  
OP GAS DETECTORS

|       |            |       |                       |
|-------|------------|-------|-----------------------|
| A     | 10/07/2013 | ADJ   | ORIGINAL ISSUE        |
| ISSUE | DATE       | DRAWN | DESCRIPTION OF CHANGE |

|  |       |
|--|-------|
|  | TITLE |
|--|-------|

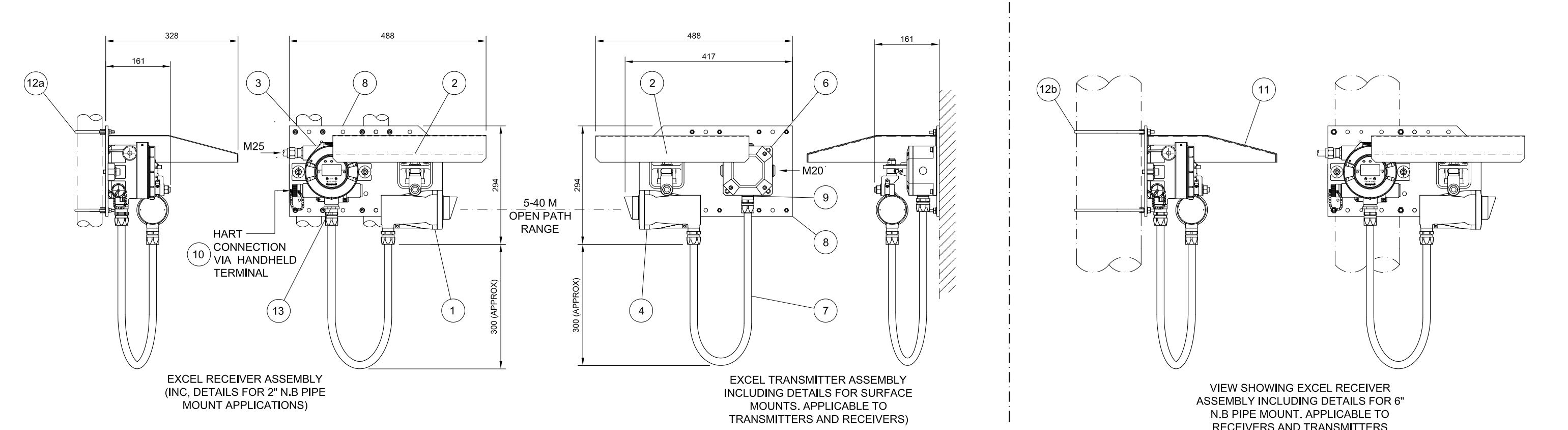
### WIRING DETAIL FOR WALL MOUNT SEARCHLINE EXCEL SHORT RANGE WITH REMOTE XNX TRANSMITTER

|       |
|-------|
| SCALE |
| NTS   |

|        |
|--------|
| DWG No |
|--------|

90199-B-8001

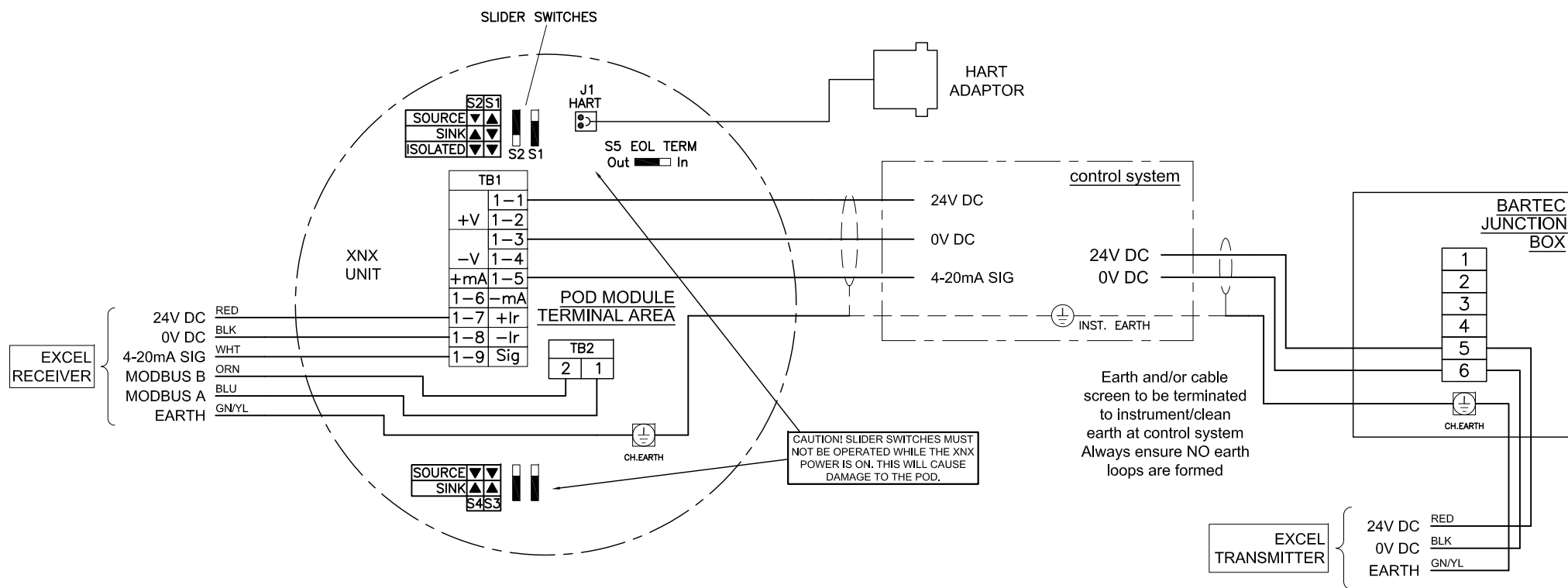
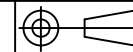
SHT. 02  
OF 02



|            |                |  |   |
|------------|----------------|--|---|
| ITEM LIST: |                | NB: ITEMS 1 TO 10 SUPPLIED AS KIT REF. 02104-N-XSSA  |   |
| 1.         | 2104B2111      | SEARCHLINE EXCEL SHORT RANGE RECEIVER<br>4-20 mA SOURCE, HYDROCARBON<br>EEx d llc T5 (Tamb -40°C to +65°C), T6 (Tamb -40°C to + 40°C<br>Ex II 2 G, BASEEFA No.98ATEX2165X<br>INGRESS PROTECTION IP67<br>316 STAINLESS STEEL, ELECTRO-POLISHED, WEIGHT 3.5kg  | 6. 00780-A-0100 OTB 122 JUNCTION BOX (BARTEC)<br>Ex II 2G, Ex II 2D T85°C<br>MAX W.4 -55°C TO +40°C<br>MAX W.1.3 -55°C TO +65°C<br>EExe II T6(Tamb -20°C TO +65°C)<br>BASEEFA No. 98ATEX3008X<br>INGRESS PROTECTION IP 66<br>MATERIAL, POLYESTER, BLACK, WEIGHT 1.02KG<br>CABLE ENTRIES, 1 x M25, 3 x M25, (BLANKING PLUGS SUPPLIED)                            |
| 2.         | 2104B2301      | MOUNTING BRACKET ASSEMBLY, SHORT/MEDIUM RANGE<br>316 STAINLESS STEEL, ELECTRO-POLISHED, WEIGHT 1.3kg<br>SUPPLIED WITH FIXINGS (TO ITEM 8)  | 7. FLEXIBLE CONDUIT<br>SUPPLIED ASSEMBLED TO RECEIVER/TRANSMITTER<br>INGRESS PROTECTION IP66-<br>* CONDUIT GALVANISED STEEL CORE WITH ENHANCED<br>OIL RESISTANT PVC COVERING<br>* CABLE GLANDS, ½"NPT & M20 BARRIER GLAND Ex II 2 G D, -60°C to +80°C<br>BASEEFA No 06ATEX0256X , INGRESS PROTECTION IP66.<br>CONSTRUCTION: BRASS WITH NYLON SEAL & EPOXY RESIN |
| 3.         | XNX-AMSI-NHNNN | XNX UNIVERSAL TRANSMITTER<br>ATEX: Ex II 2 G, Ex [ia] IIB + H2 T4 (Tamb -40°C to +65°C)<br>DEMKO 09 ATEX 0809943X<br>HART OVER 4-20mA OUTPUT<br>DEGREE OF PROTECTION IP66<br>MATERIAL, 316 STAINLESS STEEL<br>FINISH, 5 COAT MARINE PAINT YELLOW RAL-1023<br>CABLE ENTRIES: 4 x M25 (BLANKING PLUGS SUPPLIED)<br>WEIGHT, STAINLESS STEEL 5kg | 8. 2104D0237 MOUNTING PLATE, 6mm THICK , 316 STAINLESS STEEL. WEIGHT 3.8kg  |
| 4.         | 2104B2071      | SEARCHLINE EXCEL SHORT RANGE TRANSMITTER<br>EEx d llc T5 (Tamb -40°C to +65°C) T6 (Tamb -40°c to +40°C)<br>BASEEFA No.03ATEX2165X<br>INGRESS PROTECTION IP67<br>316 STAINLESS STEEL, ELECTRO-POLISHED, WEIGHT 7kg  | 9. - NYLON SEALING WASHER (SUPPLIED WITH CONDUIT ITEM 7)  |
| 5.         | 2108M0520      | OPTICAL PRODUCT DATA CD. (SEE NOTE 1)  | 10. - HART CONNECTOR FOR HAND HELD CALIBRATOR   |
|            |                |  | 11. 2104D0295 SUNSHADE (OPTIONAL)   |
|            |                |  | 12a.. 90083-A-8034 2" x M6 U BOLT PIPE MOUNTING KIT STAINLESS STEEL x 8 (OPTIONAL)  |
|            |                |  | 12b. 90083-A-8055 6" x M8 U BOLT PIPE MOUNTING KIT STAINLESS STEEL X 4 (OPTIONAL)   |
|            |                |  | 13. RDU300504 M25(M) TO M20(F) ATEX CERTIFIED REDUCER   |

- NOTES:
1. INSTALLATION TO BE CARRIED OUT IN CONJUNCTION WITH THE OPERATING INSTRUCTION MANUAL - 2104M0506  
SEARCHLINE EXCEL TECHNICAL HANDBOOK LOCATED ON THE OPTICAL PRODUCTS CD - 2108M0520.  
FOR XNX UNIVERSAL TRANSMITTER INSTALLATION REFER TO XNX MANUAL RELEASE 1 3/09.
  2. ALL DIMENSIONS ARE TYPICAL AND ARE IN MILLIMETERS.
  3. UNITS SUPPLIED LOOSE, TO BE ASSEMBLED AT SITE.

|  |  |  |  |  |  |     |              |                  |                  |             |              |                                   |     |        |             |        |    |
|--|--|--|--|--|--|-----|--------------|------------------|------------------|-------------|--------------|-----------------------------------|-----|--------|-------------|--------|----|
|  |  |  |  |  |  |     |              |                  |                  |             | SCALE        | DR'N                              | BJW | CH'D   | KW          | APP'D  | KW |
|  |  |  |  |  |  |     |              |                  |                  |             | NTS          | MAY 09                            |     | MAY 09 |             | MAY 09 |    |
|  |  |  |  |  |  |     |              |                  |                  |             |              | TITLE                             |     |        |             |        |    |
|  |  |  |  |  |  |     | D            | C                | B                | A           | ISSUE        | OUTLINE INSTALLATION, SEARCHLINE  |     |        |             |        |    |
|  |  |  |  |  |  |     | 10.12.09     | 12.11.09         | 28.06.09         | MAY 09      | DATE         | EXCEL SHORT RANGE HYDROCARBON AND |     |        |             |        |    |
|  |  |  |  |  |  |     | CERT. UPDATE | UPDATE ITEM LIST | MOD XNX ATEX No. | FIRST ISSUE | CHANGE       | XNX TRANSMITTER (ST.STL.) – ATEX  |     |        |             |        |    |
|  |  |  |  |  |  | BJW | BJW          | BJW              | BJW              | AP'D        | 91000–A–1404 |                                   |     |        | SHT. 1 OF 2 |        |    |



TERMINAL CONNECTION DETAIL  
FOR INSTALLATION INSTRUCTIONS  
SEE NOTE 1 ON SHT.1

| DR'N                              | BJW | CH'D     | KW | APP'D    | KW     |
|-----------------------------------|-----|----------|----|----------|--------|
| 20.05.09                          |     | 20.05.09 |    | 20.05.09 |        |
| TITLE                             |     |          |    |          |        |
| SEARCHLINE EXCEL SHORT RANGE      |     |          |    |          |        |
| GAS DETECTOR WITH XNX TRANSMITTER |     |          |    |          |        |
| WIRING DETAIL OPTION A            |     |          |    |          |        |
| 91000-A-1404                      |     |          |    |          | SHT. 2 |
|                                   |     |          |    |          | OF 2   |