

**QUESTEMP°**  
**HEAT STRESS MONITOR**  
**MODEL 48N**  
**USER MANUAL**





## Contents

<b>Contents</b> .....	iii
List of Figures .....	iv
List of Tables .....	iv
<b>Introduction</b> .....	1
<b>QUESTemp® 48N Model</b> .....	1
<b>Getting Started</b> .....	2
Up and Running Overview .....	2
Placing the QUESTemp® 48N on the Job Site .....	2
Keypad Operation .....	3
Turning on, Logging/Capture an Event, and Turning Off .....	4
<b>Sensors</b> .....	6
Globe Thermometer .....	6
Waterless Wetbulb & Relative Humidity Sensor .....	6
Dry Bulb Thermometer .....	6
<b>Measurements</b> .....	7
WetBulb Globe Temperature (WBGT) .....	7
Stay Times/Rest Times (Indicies) .....	7
<b>Remote measurements</b> .....	7
<b>Operating QUESTemp® 48N</b> .....	8
View .....	8
Setup .....	9
Print .....	10
Reset .....	10
Run .....	11
<b>Displayed Items</b> .....	12
Stay Time/Index .....	13
<b>Data Logging</b> .....	14
<b>Electronic Sensor Check</b> .....	15
Performing an Electronic Sensor Check .....	15
<b>Sensor Alignment</b> .....	16
RH Sensor Alignment .....	16
<b>Printing</b> .....	19
Data/Communications .....	19
Parallel .....	20
<b>Powering</b> .....	21
9-Volt Alkaline Battery Replacement .....	21
Approved 9-Volt Batteries .....	21
<b>Appendix A: Specifications</b> .....	22
Measurements .....	22
Data Logging mode and Event logging mode .....	22
Languages .....	22
Sensors .....	22
Operating Temperature Range .....	22
Housing .....	22
Size .....	23
Weight .....	23
Remote Sensor Bar .....	23
Power .....	23
Battery Life .....	23
<b>QUESTemp® 48N Block Model</b> .....	24
<b>Appendix B: Heat Exposure Tables</b> .....	25
ACGIH .....	25
ACGIH Clothing Corrections .....	26
United States Navy .....	26
Flag Conditions for U.S. Navy/Marine Corp. Ashore .....	28
<b>Appendix C: Accessories (sold separately)</b> .....	29
<b>Appendix D: Software</b> .....	30
DMS quick overview .....	30
Communicating and Downloading in DMS .....	30
Data Finder and Quick Reports .....	31
<b>Contact/Service information</b> .....	34
Technical Support Contacts .....	34
Service Contact Information .....	34
Returning for Service .....	35
<b>Calibration</b> .....	35
<b>Warranty</b> .....	36

## List of Figures

1-1: QUESTemp <sup>o</sup> 48N.....	1	1-21: Index for ACGIH.....	13
1-2: Keypad keys identified.....	3	1-22: Navy PHELS screen.....	13
1-3: Start-up screens (A – indicates model and type B- indicates revision and battery power) ..	4	1-23: Flag Conditions Navy/Marine Corp. Ashore ....	14
1-4: Index start-up screen.....	4	1-24: Main menu with view selected (A) & measurement screen (B) .....	16
1-5: Log rate start-up screen.....	4	1-25: Alignment screen.....	16
1-6: Main menu of the QT48N .....	5	1-26: Sunshield & placement of finger cot prior to RH alignment.....	17
1-7: Measurement screen (example).....	5	1-27: RH alignment with Low % example.....	17
1-8: Sensors identified .....	6	1-28: RH alignment with High% screen.....	18
1-9: Main menu example .....	8	1-29: Sample DMS event data report.....	19
1-10: Viewing measured data .....	8	1-30: Sample printouts.....	20
1-11: Selecting temperature setting and setup .....	9	1-31: 9-volt battery.....	21
1-12: Selecting temperature setting.....	9	1-32: Communicating with the QT <sup>o</sup> 48N and DMS...	30
1-13: Selecting log rate with event log .....	10	1-33: Communicating with the QT <sup>o</sup> 48N and DMS...	31
1-14: Run mode indicator.....	11	1-34: Data Finder Page .....	31
1-15: Wet and Dry screen.....	12	1-35: Quick Report.....	32
1-16: Globe and RH screen .....	12	1-36: Analyze button opens to the panel layout page .....	33
1-17: WBGT screen .....	12		
1-18: Time and Date screen .....	12		
1-19: Battery & memory screen .....	13		
1-20: Navy PHEL stay times .....	13		

## List of Tables

1-1: Keypad explained .....	3
1-2: Settings indentified .....	9
1-3: Example of a Memory table.....	14

## Introduction

The QUESTemp° 48N offers traditional heat stress monitoring without the aggravation of maintaining a wet bulb. Through collaboration with Professor Dr. Thomas Bernard, from the College of Public Health at the University of South Florida, mathematical models were implemented to create a **Waterless Wet Bulb calculation** through a combination of dry bulb temperature, globe temperature, relative humidity, and air flow.



Figure 1-1: QUESTemp° 48N

## QUESTemp° 48N Model

The QUESTemp° 48N model was specifically engineered for the Department of Defense Ashore and Afloat Operations in which conditions require hand's free monitoring, in-the-field user RH/WBGT sensor alignments, and snapshot measurement logging (called "event logging mode").

The QT48N measures and calculates the dry bulb, wet bulb, globe, WBGT outdoors, and relative humidity with two different types of data logging modes – as a time history session or an event logging mode.

You also have the capability to measure stay times in order to manage work/rest regimens. Guidance is based on the screening criteria for heat stress as defined in the ACGIH TLV Handbook, U.S. Navy PHEL charts, and Flag Conditions for U.S. Navy/Marine Corp. Ashore.

## Getting Started

### Up and Running Overview

1. Place the QUESTemp<sup>o</sup> 48N in the work area in a safe location approximately 3.5 feet off the ground.
- ↓
2. Turn the unit **On**. If the battery voltage displayed during the power-on sequence is less than or equal to 6.4 volts, replace or recharge the batteries.
- ↓
3. Be aware that the sensors require 10 minutes to stabilize to a new environment.
- ↓
4. In the main menu, **View** will be selected (an indicator arrow denotes the selected menu). Press the **I/O Enter** key and the measurement screen will appear.
- ↓
5. Press the **Run/Stop** key to begin datalogging. Use the **Arrow keys** to set the display to the desired items.

### Placing the QUESTemp<sup>o</sup> 48N on the Job Site

The QUESTemp<sup>o</sup> 48N should be placed at a height of 3.5 feet (1.1 m) for standing individuals or 2 feet (.6 m) for seated individuals. Tripod mounting is recommended to get the unit away from anything that might block radiant heat or airflow. A 1/4" x 20 threaded bushing on the bottom of the instrument allows mounting to a standard photographic tripod. **DO NOT** stand close to the unit during sampling.

Before data logging, allow ten minutes for the sensors readings to stabilize.

## Keypad Operation

The unit operates using a keypad with four keys. The **I/O Enter key** responds when the key is released while all other keys respond when the key is pressed.

Keys	Explanation
I/O Enter key	The unit turns on with a single key press. The unit turns off by holding the key down while a countdown of 3-2-1 occurs in the lower right corner of the display. This key is also used to select a mode (such as <b>Setup</b> or <b>View</b> ) or enter setup changes.  Pressing and releasing the key while viewing temperatures causes the display to view the next available sensor bar (indicated in the upper right corner of the display).
Up Arrow key	Changes items appearing in the display. Scrolls up.
Down Arrow key	Changes items appearing in the display. Scrolls down.
Run/Stop key	From the menu or view modes, pressing this key starts or stops the run mode. Pressing this key will exit the setup, print or reset modes.
Escaping or moving back one screen	If you are in the setup, print, reset, or sensor alignment screens, you can press <b>Run/Stop</b> key to escape or move back one screen.

Table 1-1: Keypad explained



Figure 1-2: Keypad keys identified

## Turning on, Logging/Capture an Event, and Turning Off

To quickly get you started with the QUESTemp® 48N, the following section explains turning on the instrument, data logging/event logging, and stopping.

1. Press the **I/O Enter** key to turn on.
    - The first two start-up screens detail the name, type of instrument, and then a revision and battery power screen appears. (Ensure the battery level does not fall below 6.4V or you will want to replace the battery. See “Power options” for more details.)
- ☒ **NOTE:** If you have data saved on the instrument, an additional screen stating “data in memory” will appear prompting you to reset the instrument, if desired.

A	B
<div> <div>QUEST</div> <div>QT-48N      WWB</div> </div>	<div> <div>REVISION      1.25</div> <div>BATTERY      8.3V</div> </div>

Figure 1-3: Start-up screens (A – indicates model and type  
B- indicates revision and battery power)

2. In the **Index Start-Up** screen, press **I/O Enter** key.
 

☒ **NOTE:** If an index is selected from the Setup menu, this will appear on this screen.

Index:    - - - -  
             <ENTER>

Figure 1-4: Index start-up screen

3. A **Log Rate Start-Up** screen will appear, press **I/O Enter** key. (This screen details your log rate time or event logging setup option and the last saved logged session or event.) (See Setup for more information on event logging.)

Log Rate:      1 min  
 Nxt 01 <ENTER>

Figure 1-5: Log rate start-up screen



4. The **main menu** (navigational screen) will appear after the start-up screens. Press **I/O Enter** key. (This will open to the measurement screens.)

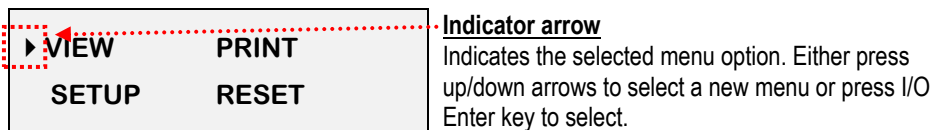


Figure 1-6: Main menu of the QT48N

5. Press **Run/Stop** key to either Data Log or log/record an Event and an asterisk will appear in far right corner.

☑ **NOTE:** Data logging or an Event is selected via the Setup menu.

- **Numeric counter**
  - **Event logging/recording:** As you record events, the numeric counter will increase by one displaying the number of saved events.
  - **Data logging mode:** This will display the number of saved data logged sessions instead of Events. (The process is identical to event mode.)

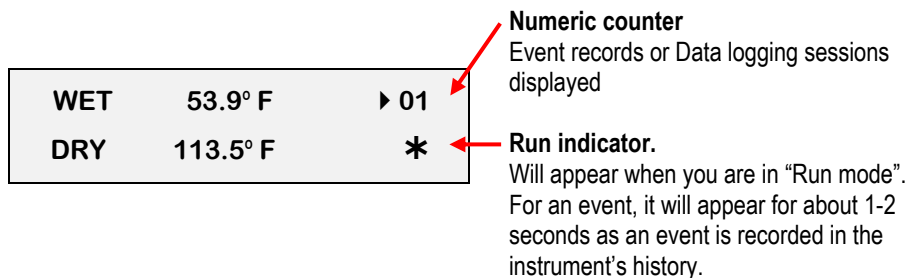


Figure 1-7: Measurement screen (example)

6. To stop data logging, press and hold **Run/Stop** key.
 

☑ **NOTE:** Skip this step for an Event log. An event log will capture the measurements with the initial run/stop key press.)
7. To view different measurements, press the **Up** or **Down Arrow** key to toggle through the views.
8. To return to the **main menu**, press and hold the **I/O Enter** key (3, 2, 1 countdown will appear) and the main menu will display.
  - To select an option on the main menu, press the **Up or Down Arrow** until an arrow appears directly in front of the appropriate menu selection and then press **I/O enter** key.

9. To **power off**, press and hold the **I/O Enter key** from the main menu.

Sensors

Globe Thermometer

The globe thermometer (left position) gives an indication of the radiant heat exposure on an individual due to either direct sunlight or hot objects in the environment. This is accomplished by placing a temperature sensor inside a blackened copper sphere and measuring the temperature rise. The WBGT index is based on the response of a 6 inch diameter globe. The QUESTemp<sup>®</sup> uses a 2-inch diameter globe for a faster response time. The temperature of the 2 inch globe is correlated to match that of a 6 inch globe.

Waterless Wetbulb & Relative Humidity Sensor

The relative humidity sensor (middle position) is used to calculate the Waterless Wetbulb from a combination of dry bulb temperature, humidity and wind speed measurements. The waterless wetbulb is used to calculate an estimated WBGT value.

Dry Bulb Thermometer

The dry bulb thermometer (right position) measures the ambient air temperature. This measurement is used in the outdoor WBGT calculation when a high solar radiant heat load may be present. The series of white plates surrounding the sensor shield it from radiant heat.

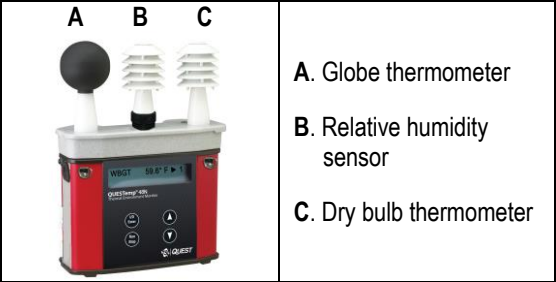


Figure 1-8: Sensors identified

## Measurements

The QUESTemp<sup>®</sup> 48N data logging, with an event logging mode, heat stress monitor directly senses three parameters: dry bulb temperature (DB), globe temperature (G), and relative humidity (RH).

It computes the Wet Bulb (WB), the Wet Bulb Globe Temperature (WBGT), and the Stay Times Indices for ACGIH, U.S. Navy PHEL charts, and Flag Conditions for U.S. Navy/Marine Corp. Ashore.

### WetBulb Globe Temperature (WBGT)

The WBGT is a type of temperature index which combines the effects of temperature, humidity, radiant heat, and air flow and provides a relatively simplistic tool to analyze thermal comfort. The resulting WBGT values can then be compared to indices of work-rest regimens (stay times) based upon workloads.

The WBGT calculation is a weighted average of the three temperature sensors using the following formulas:

**\*\*NOTE:** Navy and Marine calculations are all based on the outdoor computation.

- $WBGT (outdoor) = 0.7WB + 0.2G + 0.1DB$  (denoted as “WBGT” on the display)

### Stay Times/Rest Times (Indices)

Stay Times Indices represent how long a worker should be able to safely work under heat stress conditions. Select one of four indices for displaying and printing from the unit: ACGIH Stay Times, NAVY PHEL's, or Flag Conditions for U.S. Navy/Marine Corp. Ashore. Refer to Appendix B for more information on the indices.

☒ **NOTE:** It will appear as “Index” on the measurement screen.

### Remote measurements

The top sensor bar may be removed from the instrument and used through a remote cable. (Refer to Appendix C for remote cable options.) Shelter the instrument and remote the sensor bar if the measured environment is expecting heavy rain or if temperatures are above 60°C.

## Operating QUESTemp° 48N

From a powered on mode, the main menu will appear (after the start-up screens are displayed.) Use the **Up Arrow** and **Down Arrow** keys to move the marker in the display in front of the desired mode. Pressing the **I/O Enter** key will select the mode.

<b>VIEW</b>	<b>PRINT</b>
► <b>SETUP</b>	<b>RESET</b>

Figure 1-9: Main menu example

### View

Displays the measured data but does not log it. If more than one set of sensors is plugged into the unit, they can be displayed by pressing and releasing the **I/O Enter** key. The displayed **sensor set** is shown in the **upper right corner**.

<b>WET</b>	<b>53.9° F</b>	► <b>01</b>	<b>View mode</b> Arrow icon Indicates you are in view mode
<b>DRY</b>	<b>113.5° F</b>		<b>Event #</b> Last logged event/session

Figure 1-10: Viewing measured data

- ☑ **NOTE:** To return to the main menu, hold down the **I/O Enter** key while a 3, 2, 1 countdown is shown in the lower right corner of the display.

## Setup

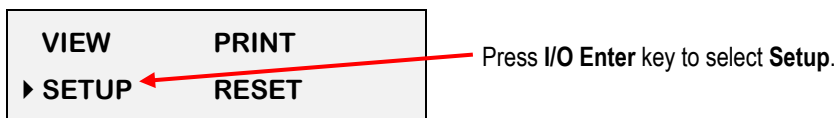
The setup options are from the main menu when Setup is selected. At any time, to exit (or escape) a screen, press the Run/Stop key. Table 1-2 identifies the setup parameters.

Settings	Explanation
Temperature units	<ul style="list-style-type: none"> <li>Selectable: °F/°C</li> </ul>
Language setting	<ul style="list-style-type: none"> <li>Selectable: English, Spanish, French, Italian, and German</li> </ul>
Time and Date	<ul style="list-style-type: none"> <li>Time settings: 24-hour clock</li> <li>Day-month-year format</li> </ul>
Log Rate	<ul style="list-style-type: none"> <li>1, 2, 5, 10, 15, 30, 60 minutes log rate options</li> <li>Event Log: when run/stop is pressed, an event or snapshot of the current conditions is logged into memory. The events range from 0-99.</li> </ul>
Index/Stay Times	<ul style="list-style-type: none"> <li>ACGIH, PHEL, FLAG, or none (denoted "----")</li> </ul>

**Table 1-2: Settings identified**

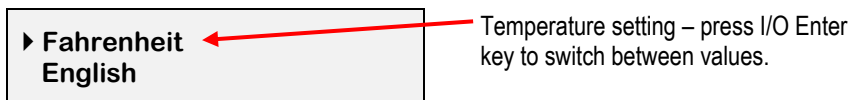
### ► Selecting Setup parameters

- From the main menu, select **Setup** by pressing the **I/O Enter** key. Using the **Up/Down Arrow** keys, select the settings in steps 2-6.



**Figure 1-11: Selecting temperature setting and setup**

- For the **Time and Date** settings, once selected, press **I/O Enter** key to move to the update field. (An underline will appear under the first field.)
  - Press **Up/Down Arrows** to change the number/month. Press **I/O Enter** key to toggle through each field. Repeat as necessary until all values are selected.
- For the **Temperature setting**, either **Fahrenheit** or **Celsius** will appear. Press the **Up/Down Arrow** to select and **I/O Enter** key to change.



**Figure 1-12: Selecting temperature setting**

4. For the **Language** setting, once selected, press **I/O Enter** key. To select a language, press **Up/Down Arrow** keys. Once selected, press **Run/Stop** key to return to setup parameters.
5. For the **Log Rate**, once selected, press **I/O Enter** key.
  - Repeatedly press **I/O Enter** keys to select either the Log Rate Event or a Log Rate interval (for data logging; e.g. "5").
  - *Optional:* changing **Next Event field**. Events are numbered starting at 1 and incrementing. The number may be increased to simulate skipping events. This may be useful if the events represent locations and the starting location is somewhere other than 1.

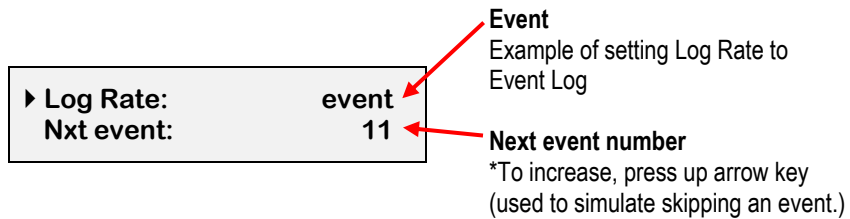


Figure 1-13: Selecting log rate with event log

6. For the **Index** setting, once selected press **I/O Enter** key. Press **Up/Down Arrow** keys to select: "---" (which is equivalent for no index), ACGIH, PHEL, or Flag.
7. Exit Setup by pressing the **Run/Stop** key.

## Print

Allows printing to a parallel or serial printer or to a computer. The QUESTemp° 48N Heat Stress Monitor will recognize the cable plugged in and configure itself for serial or parallel. If no cable is plugged in, it will default to serial. Press **I/O Enter** key to begin printing. Press **Run/Stop** key to return to the menu.

☒ **NOTE:** If you want to stop the printing, press **I/O Enter** key until you return to the main menu. When the printer has stopped printing, remove the cable from the printer to the instrument.

## Reset

Resetting enables you to clear the logged data from memory. Press the **I/O Enter key** to enter the **Reset mode**. Clear the memory by holding down the **I/O Enter key** while the display counts down from three.

## Run

For Data Logging setup, the run mode begins a session in memory and logs the data. For Event Logging, each run/stop is stored as an event and a numeric counter displays the number of saved events.

1. Begin a session by pressing the **Run/Stop key** from the view mode (or measurement view). An asterisk in the lower right corner indicates the run mode.

☑ To toggle through the views, press the **Up or Down Arrow**.



Figure 1-14: Run mode indicator

2. End the session by pressing the **Run/Stop key** again. (The session will stop recording when the asterisk is no longer displayed.)
- ☑ **NOTE:** If the logging memory is full or if there are no sensors plugged into the unit, attempting to enter the Run mode will result in an error message. If the memory capacity is exceeded, the asterisk in the lower right corner of the display will turn into an “F” and the memory remaining screen will show “0.0”.

## Displayed Items

For the QUESTemp<sup>®</sup> 48N Heat Stress Monitor, the number in the upper right corner indicates the saved session or the saved event log.

- “1” indicates the sensor bar placed on (or attached to) the top of the instrument. Sensors 2 and 3 are labeled on the side of the unit as “Sensor 2”, and “Sensor 3”.
- An “\*” asterisk in the lower right corner indicates that the unit is in the run mode and is logging data or saves an event.

The following measurements can be accessed on the display:

**Screen 1:** WET (Wet bulb)  
              DRY (Dry bulb)

<b>WET</b>	<b>80.5° F</b>	<b>► 01</b>
<b>DRY</b>	<b>92.2° F</b>	<b>*</b>

Figure 1-15: Wet and Dry screen

**Screen 2:** GLOBE and RH

<b>GLOBE</b>	<b>40.4°C</b>	<b>► 03</b>
<b>RH</b>	<b>52.5%</b>	<b>*</b>

Figure 1-16: Globe and RH screen

**Screen 3:** WBGT

<b>WBGT</b>	<b>30.7°C</b>	<b>► 3</b>
		<b>*</b>

Figure 1-17: WBGT screen

**Screen 4:** Time (24 hour format)  
              Date (day, month, year)

<b>TIME</b>	<b>11:04:13</b>	<b>► 04</b>
<b>DATE</b>	<b>14-MAY-18</b>	<b>*</b>

Figure 1-18: Time and Date screen



**Screen 5:** BAT (Battery voltage)  
MEM (Logging memory  
available in days)

BAT	09:04:13	▶ 05
DATE	10.4 dy	*

Figure 1-19: Battery & memory screen

**Screen 6:** Index  
(Navy PHEL stay times)

PHEL_5	3:10	▶ 05
PHEL_6	8:03	*

Figure 1-20: Navy PHEL stay times

- ☑ **NOTE:** A series of dashes appear in the display if one of the following occur:
- The temperature is outside of its allowable range
  - A temperature sensor has failed
  - Stay times temperatures are outside of the their defined range

Stay Time/Index

The screen(s) displaying stay time data appear different for each of the possible indices.

If **ACGIH** is selected, the recommended working minutes per hour are shown for each of the workload categories Light (L), Moderate (M), Heavy (H), and Very Heavy (VH).

L	M	H	VH	▶ 04
60	45	30	15	*

Figure 1-21: Index for ACGIH

If the **Navy PHELs** are selected, the recommended working hours are shown based on a maximum of eight hours. Three screens are used to display the PHELs two at time.

- ☑ **NOTE:** “8:01” following one of the PHELs indicates greater than eight hours.

PHEL_5	3:10	▶ 05
PHEL_6	8:03	*

PHELs stay time is greater than 8 hours.

Figure 1-22: Navy PHELs screen

If **Flag** is selected, the Flag Conditions for Navy/Marines Corp. Ashore warning system screen will appear. There are five flag systems, no flag, yellow, green, red, and black, which provide heat exposure guidelines for acclimated individuals. (For more information, refer to the “Flag Conditions US Navy/Marine Corp. Ashore”.)

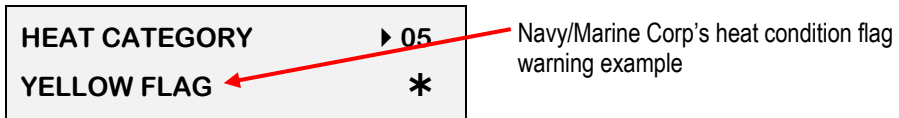


Figure 1-23: Flag Conditions Navy/Marine Corp. Ashore

## Data Logging

Data from each sensor is recorded at the interval set by the logging rate. Every time **Run/Stop** is pressed, a session is either started or ended in memory. Each session contains a header with time, date, and summary information.

Memory Table: Gives the number of logging DAYS.

Log Rate	1 min	2 min	5 min	10 min	15 min	30 min	60 min
1 sensor	11.2	22.5	56.2	112.4	168.6	337.3	674.5
2 sensors	5.6	11.2	28.1	56.2	84.3	168.6	337.3
3 sensors	3.7	7.5	18.7	37.5	56.2	112.4	224.8

Table 1-3: Example of a Memory table

## Electronic Sensor Check

A verification module, TSI model 053-923, may be used to check the operation of the QUESTemp monitor's wet bulb, dry bulb, and globe. The purpose is to verify that the electronic components are within a specific range with known values and a known source. The temperature tolerances should be within  $\pm 0.5^{\circ}\text{C}$ .



Example of Verification module

- ☑ **NOTE:** If the sensors are outside of the tolerances, this indicates the sensor alignment should be serviced off-site for calibration.

## Performing an Electronic Sensor Check

1. Ensure the instrument is reading in Celsius prior to your electronic sensor check.
  - To change the temperature setting, select **Setup** from the main menu. Then, either Fahrenheit or Celsius will appear on the screen. When selected, press **I/O enter** key to switch between settings. For more information, refer to step 3.
2. Remove the top sensor bar, place to the side, and plug in the verification module into the center pins of the sensor housing.
3. Verify the measurement readings on the screen are within  $\pm 0.5^{\circ}\text{C}$  tolerance to the readings printed on the verification module label. Example below:
  - a. Wet Bulb (WB):  $11.1^{\circ}\text{C}$
  - b. Dry Bulb (DB):  $45.3^{\circ}\text{C}$
  - c. Globe (G):  $69.2^{\circ}\text{C}$
- ☑ **NOTE:** Relative humidity (RH) is not valid on this instrument.
4. Once completed, remove verification module and place sensor bar back on the instrument. (Tighten down the two bolts.) Change the Celsius reading back to Fahrenheit. (Refer to step 1 a-b.)

## Sensor Alignment

For highly accurate measurement readings, you should align your QUESTemp<sup>®</sup> 48N prior to data logging or event logging/recording. For the RH sensor, it is recommended to align with a High concentration level using the 75% sensor salt, NaCl (sodium chloride), or a Low concentration level using the, the 33% sensor salt, MgCl (magnesium chloride). (To order sensor alignment salts, refer to an online vendor such as, colepalmer.com.)

### RH Sensor Alignment

- To open, navigate to the main menu and select **View** by pressing **I/O Enter** key (see **A**). A measurement screen will appear (see **B**).

A		B	
► <b>VIEW</b>	<b>PRINT</b>	<b>WET</b>	<b>50.7° F</b>
<b>SETUP</b>	<b>RESET</b>	<b>DRY</b>	<b>70.6° F</b>

Figure 1-24: Main menu with view selected (A) & measurement screen (B)

- Press and hold **I/O Enter** key and then press **Down Arrow** key from the **View** menu. The **Alignment** screen will appear.

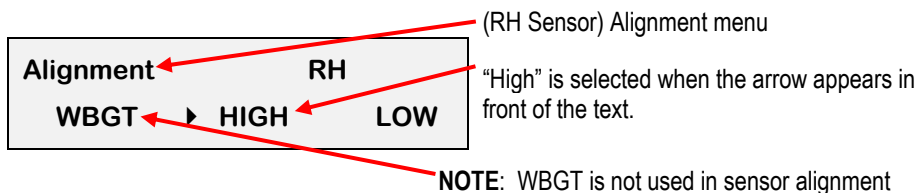


Figure 1-25: Alignment screen

- Press **Up/Down Arrow** key to select either **High** or **Low**. Then press **I/O Enter** key.
- Remove** (or slide) the **Sunshield** (white globe) from the **RH sensor** and place it to the side. (See Figure 1-26).

5. **Place a latex finger cot** (user supplied) over the humidity sensor in order for the sensor to stabilize quicker about 15 minutes (or up to 60 minutes without).

☒ **NOTE:** Latex finger cots can be found at various hardware stores or online such as colepalmer.com.



Figure 1-26: Sunshield & placement of finger cot prior to RH alignment

6. **Place the Salt container**, with the salt alignment cap removed, over the **RH sensor** (middle sensor). Allow level to **stabilize** for at least **15 minutes**. (Refer to Figure 1-25.)

- About sensor alignment: if readings are within  $\pm 0.5\%$ , a change in sensor alignment is not required. Skip to step 7 to return to main menu.

☒ **NOTE:** For a High alignment, use the 75% sensor alignment salt (NaCl) and for a Low alignment, use the 33% alignment salt (MgCl).

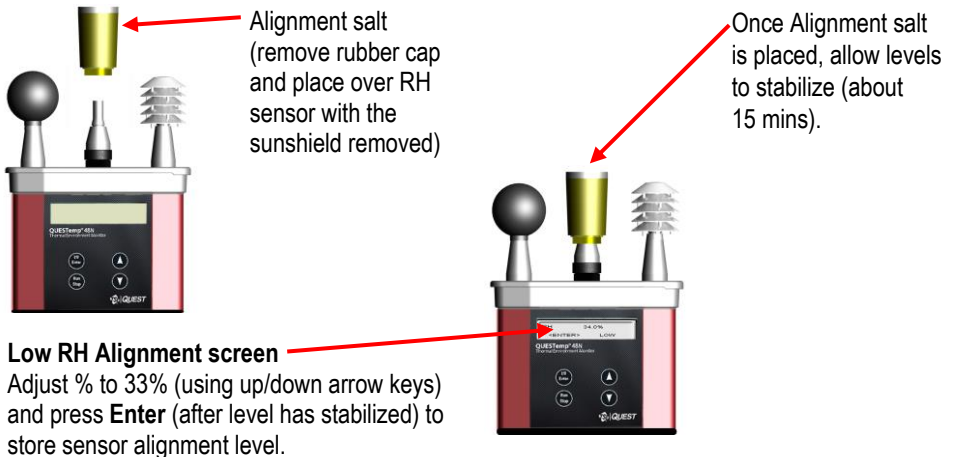
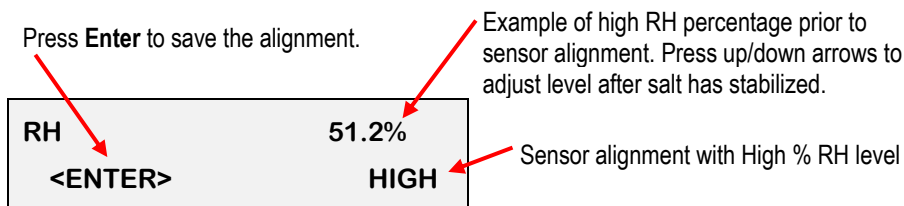


Figure 1-27: RH alignment with Low % example

7. In either the High/Low RH alignment screen, adjust the level to the percentage displayed on the salt container by using the **Up/Down Arrow** keys. Press **I/O Enter** key to save. (The instrument will state either “Successful” or “Failure” if it passed/did not pass. For “Failure” repeat the steps above.)



**NOTE:** WBGT is not used in sensor alignment

**Figure 1-28: RH alignment with High% screen**

8. To return to the main menu, press **Run/Stop** key.
9. Verify the RH sensor is  $\pm 0.5\%$  of the specific percentage. If not repeat the steps above.
10. Remove the alignment salt and finger cot. Replace the Sunshield over the RH sensor when completed with the sensor alignment.

## Printing

Printing options include to a RS-232 port or to a parallel printer. Serial transmission requires TSI cable #54-715. Parallel transmission requires TSI cable #56-875. With the applicable cable plugged in, select **PRINT** from the menu and press the **I/O Enter key** to enter the **PRINT** mode. Begin printing by pressing the **I/O Enter key**. Press the key again to abort the printing.

## Data/Communications

TSI Detection Management Software DMS is recommended for downloading, storing, graphing, and printing reports (see below). Communications programs, such as Windows® HyperTerminal® may also be used to capture the printout into a file. The baud rate is fixed at 9600.

Heat Stress Report (Event Summary Data)					
2/21/2013					
Event Log 1: Summary Data Panel					
Description	Meter	Value	Description	Meter	Value
Dry Bulb Max	SensorBar 1	25.15 °C	Dry Bulb Max Time	SensorBar 1	9/9/2011 8:25:30 AM
Globe Max	SensorBar 1	25.15 °C	Globe Max Time	SensorBar 1	9/9/2011 8:25:30 AM
Heat Index Max	SensorBar 1	24.37 °C	Heat Index Max Time	SensorBar 1	9/9/2011 8:25:30 AM
Humidex Max	SensorBar 1	--	Humidity Max	SensorBar 1	50.7 %
Humidity Max Time	SensorBar 1	9/9/2011 8:25:30 AM			
Event Log 2: Summary Data Panel					
Description	Meter	Value	Description	Meter	Value
Dry Bulb Max	SensorBar 1	26.65 °C	Dry Bulb Max Time	SensorBar 1	1/11/2012 11:27:14 AM
Globe Max	SensorBar 1	27.84 °C	Globe Max Time	SensorBar 1	1/11/2012 11:24:40 AM
Heat Index Max	SensorBar 1	26.74 °C	Heat Index Max Time	SensorBar 1	1/11/2012 11:26:29 AM
Humidex Max	SensorBar 1	--	Humidity Max Time	SensorBar 1	1/11/2012 11:26:30 AM
Event Log 3: Summary Data Panel					
Description	Meter	Value	Description	Meter	Value
Dry Bulb Max	SensorBar 1	25.37 °C	Dry Bulb Max Time	SensorBar 1	1/13/2012 9:17:43 AM
Globe Max	SensorBar 1	25.86 °C	Globe Max Time	SensorBar 1	1/13/2012 9:17:43 AM
Heat Index Max	SensorBar 1	--	Heat Index Max Time	SensorBar 1	--

Figure 1-29: Sample DMS event data report

## Parallel

Data can be sent directly to parallel printers that accept direct ASCII test input without special drivers. Make sure the **printer is powered on** and is **online**, ready to accept data, prior to printing.

<p style="text-align: center;"><b>TSI QUEST TECHNOLOGIES</b> <b>HEAT STRESS REPORT</b></p> <p style="text-align: right;">Page 1</p> <p>File Name _____ <b>QUESTemp®48N Rev 1.00</b> Serial # <b>TK09090909</b></p> <p>Employee _____</p> <p>Facility _____ Session (3) Start: 21-NOV-09 11:07:32</p> <p>Department _____ Stop: 21-NOV-09 11:10:15</p> <p>Job _____ Printed: 21-NOV-09 11:16:00</p> <p>Comments/NOTES _____ —</p> <hr/> <p>Logging Interval: 1 minutes Degrees Fahrenheit</p> <p><b>MAXIMUM LEVELS, Sensor 1</b></p> <table style="width: 100%;"> <tr><td>WBGT</td><td>68.3</td><td>21-NOV-09</td><td>11:10:08</td></tr> <tr><td>DRY BULB</td><td>82.7</td><td>21-NOV-09</td><td>11:09:56</td></tr> <tr><td>GLOBE</td><td>91.4</td><td>21-NOV-09</td><td>11:10:12</td></tr> <tr><td>REL HUMIDITY</td><td>14%</td><td>21-FEB-08</td><td>11:07:32</td></tr> <tr><td>FLOW (m/s)</td><td>0.6</td><td>21-FEB-08</td><td>11:09:08</td></tr> </table> <p><b>MAXIMUM LEVELS, Sensor 2</b></p> <table style="width: 100%;"> <tr><td>WBGT</td><td>80.5</td><td>21-FEB-08</td><td>11:10:11</td></tr> <tr><td>DRY BULB</td><td>99.2</td><td>21-FEB-08</td><td>11:09:07</td></tr> <tr><td>GLOBE</td><td>106.1</td><td>21-FEB-08</td><td>11:10:06</td></tr> <tr><td>HEAT INDEX</td><td>0</td><td>00-XXX-00</td><td>00:00:00</td></tr> <tr><td>REL HUMIDITY</td><td>15%</td><td>21-FEB-08</td><td>11:07:32</td></tr> </table> <p><b>MAXIMUM LEVELS, Sensor 3</b></p> <table style="width: 100%;"> <tr><td>WBGT</td><td>68.6</td><td>21-FEB-08</td><td>11:09:56</td></tr> <tr><td>DRY BULB</td><td>88.6</td><td>21-FEB-08</td><td>11:10:08</td></tr> <tr><td>GLOBE</td><td>93.0</td><td>21-FEB-08</td><td>11:10:03</td></tr> <tr><td>HEAT INDEX</td><td>0</td><td>00-XXX-00</td><td>00:00:00</td></tr> <tr><td>REL HUMIDITY</td><td>11%</td><td>21-FEB-08</td><td>11:07:32</td></tr> </table> <p><b>MAXIMUM LEVELS, Sensor(WEIGHTED AVERAGE)</b></p> <table style="width: 100%;"> <tr><td>WBGT</td><td>71.4</td><td>21-FEB-08</td><td>11:10:14</td></tr> </table>	WBGT	68.3	21-NOV-09	11:10:08	DRY BULB	82.7	21-NOV-09	11:09:56	GLOBE	91.4	21-NOV-09	11:10:12	REL HUMIDITY	14%	21-FEB-08	11:07:32	FLOW (m/s)	0.6	21-FEB-08	11:09:08	WBGT	80.5	21-FEB-08	11:10:11	DRY BULB	99.2	21-FEB-08	11:09:07	GLOBE	106.1	21-FEB-08	11:10:06	HEAT INDEX	0	00-XXX-00	00:00:00	REL HUMIDITY	15%	21-FEB-08	11:07:32	WBGT	68.6	21-FEB-08	11:09:56	DRY BULB	88.6	21-FEB-08	11:10:08	GLOBE	93.0	21-FEB-08	11:10:03	HEAT INDEX	0	00-XXX-00	00:00:00	REL HUMIDITY	11%	21-FEB-08	11:07:32	WBGT	71.4	21-FEB-08	11:10:14	<p><b>EVENT: 1</b> <span style="float: right;">Page 2</span> <b>Sensor: 1</b> Degrees Fahrenheit Stay Times: ACGIH, Acclimated, WBGT, clo correction = 1.0 °C</p> <table style="width: 100%;"> <tr><th>TIME</th><th>WBGT</th><th>DRY</th><th>GLOBE</th><th>RH</th><th>HI</th><th>FLOW</th><th>L</th><th>M</th><th>H</th><th>VH</th></tr> <tr><td>11:08</td><td>67.9</td><td>82.4</td><td>90.7</td><td>13</td><td>0</td><td>0.5</td><td>60</td><td>60</td><td>60</td><td>60</td></tr> <tr><td>11:09</td><td>68.1</td><td>82.6</td><td>91.3</td><td>12</td><td>0</td><td>0.5</td><td>60</td><td>60</td><td>60</td><td>60</td></tr> </table> <p><b>EVENT: 2</b> <span style="float: right;">Page 3</span> <b>Sensor: 1</b> Degrees Fahrenheit Stay Times: ACGIH, Acclimated, WBGT, clo correction = 1.0 °C</p> <table style="width: 100%;"> <tr><th>TIME</th><th>WBGT</th><th>DRY</th><th>GLOBE</th><th>RH</th><th>HI</th><th>L</th><th>M</th><th>H</th><th>VH</th></tr> <tr><td>11:08</td><td>79.3</td><td>98.9</td><td>104.5</td><td>15</td><td>0</td><td>60</td><td>45</td><td>30</td><td>15</td></tr> <tr><td>11:09</td><td>80.2</td><td>99.2</td><td>105.6</td><td>15</td><td>0</td><td>60</td><td>45</td><td>30</td><td>15</td></tr> </table> <p><b>EVENT: 3</b> <span style="float: right;">Page 4</span> <b>Sensor: 1</b> Degrees Fahrenheit Stay Times: ACGIH, Acclimated, WBGTi, clo correction = 1.0 °C</p> <table style="width: 100%;"> <tr><th>TIME</th><th>WBGT</th><th>DRY</th><th>GLOBE</th><th>RH</th><th>HI</th><th>L</th><th>M</th><th>H</th><th>VH</th></tr> <tr><td>11:08</td><td>68.1</td><td>88.0</td><td>92.7</td><td>11</td><td>0</td><td>60</td><td>60</td><td>60</td><td>60</td></tr> <tr><td>11:09</td><td>68.4</td><td>88.3</td><td>92.9</td><td>11</td><td>0</td><td>60</td><td>60</td><td>60</td><td>60</td></tr> </table> <p><b>EVENT: 4</b> <span style="float: right;">Page 5</span> <b>Sensor: WBGT(W-AVG) = .50*WBGT(1) + .25*WBGT(2) + .25*WBGT(3)</b> Degrees Fahrenheit</p> <p>Stay Times: ACGIH, Acclimated, WBGT, clo correction = 1.0 C WBGT WBGT<sub>o</sub></p> <table style="width: 100%;"> <tr><th>TIME</th><th>W-AVG</th><th>W-AVG</th><th>L</th><th>M</th><th>H</th><th>VH</th></tr> <tr><td>11:08</td><td>71.5</td><td>70.8</td><td>60</td><td>60</td><td>60</td><td>60</td></tr> <tr><td>11:09</td><td>71.8</td><td>71.1</td><td>60</td><td>60</td><td>60</td><td>45</td></tr> </table>	TIME	WBGT	DRY	GLOBE	RH	HI	FLOW	L	M	H	VH	11:08	67.9	82.4	90.7	13	0	0.5	60	60	60	60	11:09	68.1	82.6	91.3	12	0	0.5	60	60	60	60	TIME	WBGT	DRY	GLOBE	RH	HI	L	M	H	VH	11:08	79.3	98.9	104.5	15	0	60	45	30	15	11:09	80.2	99.2	105.6	15	0	60	45	30	15	TIME	WBGT	DRY	GLOBE	RH	HI	L	M	H	VH	11:08	68.1	88.0	92.7	11	0	60	60	60	60	11:09	68.4	88.3	92.9	11	0	60	60	60	60	TIME	W-AVG	W-AVG	L	M	H	VH	11:08	71.5	70.8	60	60	60	60	11:09	71.8	71.1	60	60	60	45
WBGT	68.3	21-NOV-09	11:10:08																																																																																																																																																																																
DRY BULB	82.7	21-NOV-09	11:09:56																																																																																																																																																																																
GLOBE	91.4	21-NOV-09	11:10:12																																																																																																																																																																																
REL HUMIDITY	14%	21-FEB-08	11:07:32																																																																																																																																																																																
FLOW (m/s)	0.6	21-FEB-08	11:09:08																																																																																																																																																																																
WBGT	80.5	21-FEB-08	11:10:11																																																																																																																																																																																
DRY BULB	99.2	21-FEB-08	11:09:07																																																																																																																																																																																
GLOBE	106.1	21-FEB-08	11:10:06																																																																																																																																																																																
HEAT INDEX	0	00-XXX-00	00:00:00																																																																																																																																																																																
REL HUMIDITY	15%	21-FEB-08	11:07:32																																																																																																																																																																																
WBGT	68.6	21-FEB-08	11:09:56																																																																																																																																																																																
DRY BULB	88.6	21-FEB-08	11:10:08																																																																																																																																																																																
GLOBE	93.0	21-FEB-08	11:10:03																																																																																																																																																																																
HEAT INDEX	0	00-XXX-00	00:00:00																																																																																																																																																																																
REL HUMIDITY	11%	21-FEB-08	11:07:32																																																																																																																																																																																
WBGT	71.4	21-FEB-08	11:10:14																																																																																																																																																																																
TIME	WBGT	DRY	GLOBE	RH	HI	FLOW	L	M	H	VH																																																																																																																																																																									
11:08	67.9	82.4	90.7	13	0	0.5	60	60	60	60																																																																																																																																																																									
11:09	68.1	82.6	91.3	12	0	0.5	60	60	60	60																																																																																																																																																																									
TIME	WBGT	DRY	GLOBE	RH	HI	L	M	H	VH																																																																																																																																																																										
11:08	79.3	98.9	104.5	15	0	60	45	30	15																																																																																																																																																																										
11:09	80.2	99.2	105.6	15	0	60	45	30	15																																																																																																																																																																										
TIME	WBGT	DRY	GLOBE	RH	HI	L	M	H	VH																																																																																																																																																																										
11:08	68.1	88.0	92.7	11	0	60	60	60	60																																																																																																																																																																										
11:09	68.4	88.3	92.9	11	0	60	60	60	60																																																																																																																																																																										
TIME	W-AVG	W-AVG	L	M	H	VH																																																																																																																																																																													
11:08	71.5	70.8	60	60	60	60																																																																																																																																																																													
11:09	71.8	71.1	60	60	60	45																																																																																																																																																																													

Figure 1-30: Sample printouts



## Powering

The QUESTemp<sup>®</sup> 48N Heat Stress Monitor uses a 9-volt alkaline battery. A door on the back of the instrument allows the user access to the 9-volt battery.

The 2-position switch located in the battery compartment is set by the user to the 9-volt battery.



Figure 1-31: 9-volt battery

## 9-Volt Alkaline Battery Replacement

**WARNING:** Replace batteries only in a non-hazardous environment.

The 9-volt battery should be replaced should be recharged when the voltage drops below 6.4 volts. The battery voltage is displayed when the instrument is turned on. While turned on, the battery voltage can be displayed at any time by pressing the up or down arrow keys to move through the display until the battery voltage screen appears. If, while operating, the battery voltage drops below 6.4 volts, the display will automatically switch to the display showing the battery voltage along with a low battery message. After a low battery occurs, the unit will continue to operate for approximately 8 hours. When the battery voltage falls to 6.2 volts or below, the unit will automatically turn off.

Replace only with an approved 9-volt alkaline battery.

## Approved 9-Volt Batteries

**Eveready:** Energizer 522, EN22, 6LR61

**Duracell:** MN1604

**Panasonic:** 6LR61, 6AM6X

**Rayovac:** A1604

**UltraLife:** U9V

## Appendix A: Specifications

### Measurements

- Globe Temperature, Dry Bulb Temperature, Wet Bulb Temperature, % Relative Humidity, and WBGT Index
- Temperatures given in Celsius or Fahrenheit
- Index (displayed stay time with selected index): ACGIH TLV, U.S. Navy PHEL Charts, Flag Conditions for U.S. Navy/Marine Corp. Ashore

### Data Logging mode and Event logging mode

- Data logging mode records and prints all measurements at user selected interval of 1, 2, 5, 10, 15, 30, or 60 minutes.
- Event logging mode (1 second record) 128K bytes of data memory.

### Languages

- English, French, Spanish, Italian, German

### Sensors

- Dry Bulb Sensor- 1000 Ohm Platinum RTD
  - **Accuracy and Ranges:**  $\pm 0.5$  from  $0^{\circ}\text{C}$  to  $120^{\circ}\text{C}$  ( $\pm 0.9^{\circ}\text{F}$  from  $32^{\circ}\text{F}$  to  $248^{\circ}\text{F}$ )
- Waterless Wet Bulb (Humidity) Sensor
  - **Accuracy and Ranges: Expanded** measurement uncertainty of  $1.1^{\circ}\text{C}$  ( $k=2$ ) between  $0^{\circ}\text{C}$  and  $80^{\circ}\text{C}$  ( $32^{\circ}\text{F}$  and  $176^{\circ}\text{F}$ )
- Globe Sensor- 1000 Ohm Platinum RTD
  - **Accuracy and Ranges:**  $\pm 0.5$  from  $0^{\circ}\text{C}$  to  $120^{\circ}\text{C}$  ( $\pm 0.9^{\circ}\text{F}$  from  $32^{\circ}\text{F}$  to  $248^{\circ}\text{F}$ )
- Relative Humidity Sensor - Integrated circuit with capacitive polymer sensor
  - **Accuracy and Ranges:**  $\pm 5\%$  from 20 to 95% (non-condensing)

### Operating Temperature Range

- Sensor Assembly:  $-5^{\circ}\text{C}$  to  $+100^{\circ}\text{C}$
- Electronics:  $-5^{\circ}\text{C}$  to  $60^{\circ}\text{C}$

### Housing

- Designed water resistant to a light rain or mist. If rain is frequent, best practice would be to remote the sensor bar and keep the instrument sheltered.

**Size**

- Height 9.2 in. (23.5 cm); Width 7.2 in. (18.3 mm); Depth 3.0 in. (7.5 mm)
- Dimensions include mounted sensor assembly

**Weight**

- 2.6 lbs. (1.2 kg) with mounted sensor assembly

**Remote Sensor Bar**

- Using a cable, the top sensor bar can be setup for remote measurements, up to 200 feet (61 m).

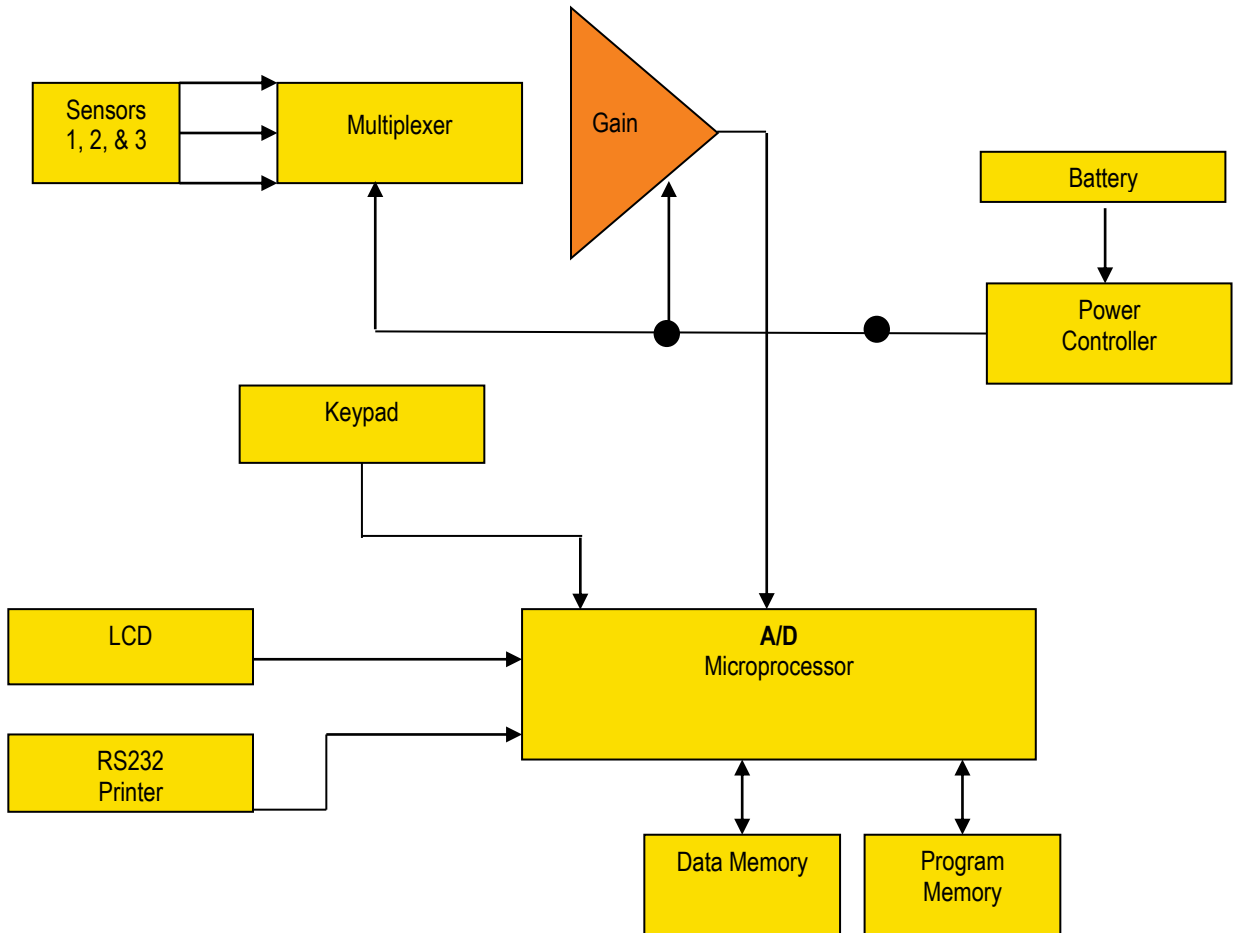
**Power**

- 9V alkaline

**Battery Life**

- 9V alkaline: 80 hours

## QUESTemp° 48N Block Model



## Appendix B: Heat Exposure Tables

### ACGIH

Screening Criteria for Heat Stress Exposure. WBGT values in °C.

**NOTE:** According to the ACGIH's guidelines, the temperature values represent a work and rest process which is explained in the standards. Refer to the ACGIH TLVs and BEIs for specific details.

Work and recovery (TLV )	Light	Moderate	Heavy	Very Heavy
75% to 100%	31.0	28.0	26.0*	23.5*
50% to 75%	31.0	29.0	27.5	25.5*
25% to 50%	32.0	30.0	29.0	28.0
0% to 25%	32.5	31.5	30.5	30.0

Work and recovery (Action Limit )	Light	Moderate	Heavy	Very Heavy
75% to 100%	28.0	25.0	22.5*	20.0*
50% to 75%	28.5	26.0	24.0	22.5*
25% to 50%	29.5	27.0	25.5	24.5
0% to 25%	30.0	29.0	28.0	27.0

\*Values not specified by ACGIH have been estimated for continuity.

## ACGIH Clothing Corrections

The following clothing corrections are in degrees Celsius. When a clothing correction is entered into the setup portion of the QUESTemp<sup>®</sup> 48N Heat Stress Monitor, the value is added to the WBGT only for looking up the stay times. The WBGT value displayed by the unit does not reflect corrections.

Clothing type	Clothing correction (Addition to WBGT (°C))
Work clothes (long sleeve shirt and pants)	0°
Cloth (woven material) coveralls	0°
Double-layer woven clothing	3°
SMS polypropylene coveralls	0.5°
Polyolefin coveralls	1°
Limited-use vapor-barrier coveralls	11°

Cited from American Conference of Governmental Industrial Hygienists, *Threshold Limit Values and Biological Exposure Indices for 2008*. Reprinted with permission.

## United States Navy

Physiological Heat Exposure Limits (PHEL) Time Table  
(Without the presence of fuel combustion gases/fuel vapors)

The recommended working hours are shown based on a maximum of eight hours. Naval personnel will follow a category, I - VI, based upon their function.

**PHEL Curves (Total Exposure Time in Hours: Minutes)**

WBGT(F)	I	II	III	IV	V	VI
80.0	>8:00	>8:00	>8:00	8:00	6:35	4:30
81.0	>8:00	>8:00	>8:00	8:00	6:35	4:30
82.0	>8:00	>8:00	8:00	7:05	5:25	3:40
83.0	>8:00	8:00	7:45	6:25	4:55	3:20
84.0	>8:00	8:00	7:05	5:55	4:30	3:05
85.0	8:00	7:45	6:30	5:20	4:05	2:50
86.0	8:00	7:05	5:55	4:55	3:45	2:35
87.0	7:25	6:30	5:25	4:30	3:25	2:20
88.0	6:45	5:55	4:55	4:05	3:10	2:10
89.0	6:10	5:25	4:30	3:45	2:50	2:00

WBGT(F)	I	II	III	IV	V	VI
90.0	5:40	5:00	4:10	3:25	2:40	1:50
91.0	5:15	4:35	3:50	3:10	2:25	1:40
92.0	4:50	4:10	3:30	2:55	2:15	1:30
93.0	4:25	3:50	3:15	2:40	2:00	1:25
94.0	4:05	3:35	3:00	2:25	1:50	1:15
95.0	3:45	3:15	2:45	2:15	1:45	1:10
96.0	3:25	3:00	2:30	2:05	1:35	1:05
97.0	3:10	2:45	2:20	1:55	1:25	1:00
98.0	2:55	2:35	2:10	1:45	1:20	0:55
99.0	2:40	2:20	2:00	1:40	1:15	0:50
100.0	2:30	2:10	1:50	1:30	1:10	0:45
101.0	2:20	2:00	1:40	1:25	1:05	0:45
102.0	2:10	1:50	1:35	1:15	1:00	0:40
103.0	2:00	1:45	1:25	1:10	0:55	0:35
104.0	1:50	1:35	1:20	1:05	0:50	0:35
105.0	1:40	1:30	1:15	1:00	0:45	0:30
106.0	1:35	1:25	1:10	0:55	0:45	0:30
107.0	1:30	1:15	1:05	0:50	0:40	0:25
108.0	1:20	1:10	1:00	0:50	0:35	0:25
109.0	1:15	1:05	0:55	0:45	0:35	0:25
110.0	1:10	1:00	0:50	0:40	0:30	0:20
111.0	1:05	1:00	0:50	0:40	0:30	0:20
112.0	1:00	0:55	0:45	0:35	0:25	0:20
113.0	0:55	0:50	0:40	0:35	0:25	0:15
114.0	0:55	0:45	0:40	0:30	0:25	0:15
115.0	0:50	0:45	0:35	0:30	0:20	0:15
116.0	0:45	0:40	0:35	0:25	0:20	0:15
117.0	0:45	0:40	0:30	0:25	0:20	0:10
118.0	0:40	0:35	0:30	0:25	0:15	0:10
119.0	0:35	0:35	0:25	0:20	0:15	0:10
120.0	0:35	0:30	0:25	0:20	0:15	0:10
121.0	0:35	0:30	0:25	0:20	0:15	0:10

WBGT(F)	I	II	III	IV	V	VI
122.0	0:30	0:25	0:20	0:15	0:15	0:10
123.0	0:30	0:25	0:20	0:15	0:10	0:10
124.0	0:25	0:25	0:20	0:15	0:10	0:05

Flag Conditions for U.S. Navy/Marine Corp. Ashore

The following chart details the heat stress monitoring Flag Conditions for U.S. Navy/Marine Corp. Ashore in Degrees Fahrenheit and Celsius.

	No Flag	Green	Yellow	Red	Black
Flag Degrees F	<80.0	80.0–84.9	85.0–87.9	88.0–89.9	>90
Flag Degrees C	<26.7	26.7–29.4	29.4–31.1	31.1–32.2	>32.2

\*Rest means minimal physical activity (sitting or standing) and should be accomplished in the shade if possible.



Appendix C: Accessories (sold separately)

Replacement Relative humidity sensor (one included) ..... 057-317

Sensor array with 2-inch Globe and removable RH sensor (one included) ..... 057-909

Sensor alignment salt at 75% [ NaCl (sodium chloride)] (one included) ..... 100-452

Sensor alignment salt at 33% [ MgCl (magnesium chloride)] (one included)..... 100-451

Verification module (one included) ..... 053-923

Neck Strap (one included)..... 0057-333

QT-3X series replacement battery cover..... QT3X-BC

QT-3X series replacement dry bulb shield assembly-consists of

    (5) shields and (1) cap/cover..... QT3X-DBS

Remote sensor cable - 6 Foot..... 053-924

Remote sensor cable - 25 Foot ..... 053-925

Remote sensor cable - 100 Foot ..... 053-926

Remote sensor cable - 200 Foot ..... 053-927

Serial/Computer interface cable (RS-232 to PC) 9 Pin ..... 054-715

RS-232 to USB converter (one included)..... 053-810

Parallel printer interface cable..... 056-875

Storage case (one included) ..... 053-922

QT48N User Manual (one included)..... 057-330

## Appendix D: Software

The QUESTemp<sup>°</sup> 48N Heat Stress Monitor has the flexibility to be set up and controlled through computer software. The programmable start and stop time feature is only accessible through the computer. The instrument also has the capability of sending **live data** while measuring. These features are best utilized using TSI Detection Management Software DMS.

### DMS quick overview

The focus of this section is to briefly introduce the following QSP-II topics: Downloading your data, setting up parameters, and viewing your data in charts, graphs, and reports. (For further details on DMS, refer to the online **Help** and select **Contents**.)

### Communicating and Downloading in DMS

In order to download, review the data, and setup parameters in DMS software, this will require connecting the QT<sup>°</sup>48N to a computer. The steps below explain connecting and communicating to DMS.

1. Using a TSI cable, part number 054-715, plug the cable into the computer and plug the opposite end into the side jack of the QT<sup>°</sup> 48 data port.


#### QT<sup>°</sup> 48 data port


- Connected and powered on



Connected to serial port

Figure 1-32: Communicating with the QT<sup>°</sup> 48N and DMS

2. From the start page of DMS, select  button and the instrument communication panel will appear.
3. Select **Heat Stress** and then select the **Model Type** by clicking on **QT<sup>°</sup>48N**. (See Figure 1-34).

4. Click on the  Download button in the Instrument Communications page while **Data Finder** checkbox is checked (see ① below).

- **NOTE:** The **Data Finder** page will appear. See next section.

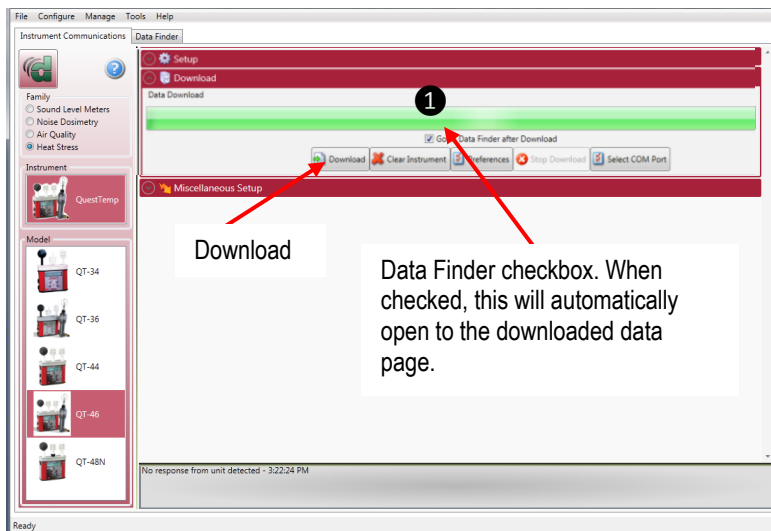


Figure 1-33: Communicating with the QT<sup>o</sup> 48N and DMS

## Data Finder and Quick Reports

In the Data finder page, the data you downloaded is stored by instrument family and then organized by models. **NOTE:** When working in this page, click on the **Most Recent** button if you are looking for your recently downloaded data.

1. In the **Data Finder** page, click on the downloaded data and select either **Analyze** or **Print Report**.

Double-click to select/view QT<sup>o</sup>44/46 data in charts and graphs

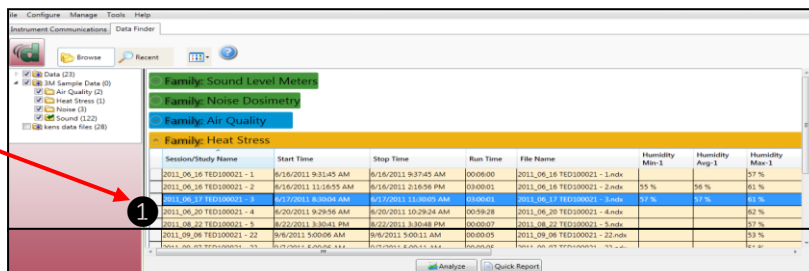



Figure 1-34: Data Finder Page

- **Quick Report:** select the  button to generate a report with basic information and a summary table of your downloaded data.

Information Panel

Name

Questemp 48N\_Heat Stress Monitoring

Start Time

2/14/2013 11:57:53 AM

Stop Time

2/14/2013 11:58:01 AM

Comments

Event log: navy ship - deck 10

Run Time

00:00:08

Serial Number

NH100914

Device Name

NH100914

Device Firmware Rev

Company Name

Description

Location

User Name

Summary Data Panel

Description	Meter	Value	Description	Meter	Value
Log Rate	Unknown	60 s	Heat Index On	Unknown	True
Air Flow On	Unknown	False			
Wet Bulb Max	SensorBar 1	15.64 °C	Wet Bulb Max Time	SensorBar 1	2/14/2013 11:57:55 AM
Dry Bulb Max	SensorBar 1	27.81 °C	Dry Bulb Max Time	SensorBar 1	2/14/2013 11:57:55 AM
Globe Max	SensorBar 1	27.71 °C	Globe Max Time	SensorBar 1	2/14/2013 11:57:54 AM
WBGT In Max	SensorBar 1	19.26 °C	WBGT In Max Time	SensorBar 1	2/14/2013 11:57:55 AM
WBGT Out Max	SensorBar 1	19.27 °C	WBGT Out Max Time	SensorBar 1	2/14/2013 11:57:55 AM
Humidity Max	SensorBar 1	21.3 %	Humidity Max Time	SensorBar 1	2/14/2013 11:57:54 AM

Stay Time Data

Figure 1-35: Quick Report

- **Analyze:** allows you to add charts/graphs and customize how they will appear in a report. **Tip:** Add the panels by using the add a panel and dragging them into the appropriate location.
- Press **Report View** button and it will generate a report based on the where the charts/graphs (panels) are placed.

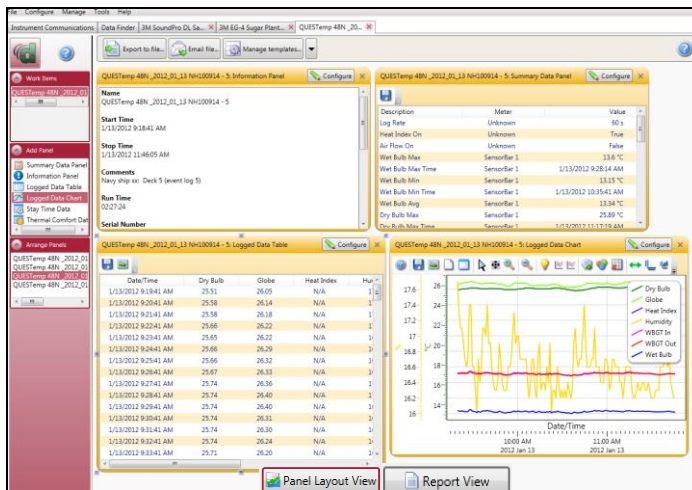


Figure 1-36: Analyze button opens to the panel layout page

## Returning for Service

Visit our website at <http://rma.tsi.com> and complete the on-line “Return Merchandise Authorization” form or call TSI at 1-800-680-1220 (USA) or (651) 490-2860, or 001 651 490 2860 (International) for specific return instructions.

Customer Service will need the following information:

- The instrument model number
- The instrument serial number
- A purchase order number (unless under warranty)
- A billing address
- A shipping address

Use the original packing material to return the instrument to TSI. If you no longer have the original packing material, seal off any ports to prevent debris from entering the instrument and ensure that the display and the connectors on the instrument front and back panels are protected. This instrument is very fragile and must be packed in a manner appropriate for a precision instrument.

## Calibration

The QUESTemp<sup>0</sup> 48N Heat Stress Monitor and TSI field calibrator devices should be examined regularly by the factory. An annual calibration is recommended. (See Service Information above.)

## Warranty

(For country-specific terms and conditions outside of the USA, please visit [www.tsi.com](http://www.tsi.com).)

Seller warrants the goods, excluding software, sold hereunder, under normal use and service as described in the operator's manual, to be free from defects in workmanship and material for **12 months**, or if less, the length of time specified in the operator's manual, from the date of shipment to the customer. This warranty period is inclusive of any statutory warranty. This limited warranty is subject to the following exclusions and exceptions:

- a. Hot-wire or hot-film sensors used with research anemometers, and certain other components when indicated in specifications, are warranted for 90 days from the date of shipment;
- b. Pumps are warranted for hours of operation as set forth in product or operator's manuals;
- c. Parts repaired or replaced as a result of repair services are warranted to be free from defects in workmanship and material, under normal use, for 90 days from the date of shipment;
- d. Seller does not provide any warranty on finished goods manufactured by others or on any fuses, batteries or other consumable materials. Only the original manufacturer's warranty applies;
- e. This warranty does not cover calibration requirements, and seller warrants only that the instrument or product is properly calibrated at the time of its manufacture. Instruments returned for calibration are not covered by this warranty;
- f. This warranty is **VOID** if the instrument is opened by anyone other than a factory authorized service center with the one exception where requirements set forth in the manual allow an operator to replace consumables or perform recommended cleaning;
- g. This warranty is **VOID** if the product has been misused, neglected, subjected to accidental or intentional damage, or is not properly installed, maintained, or cleaned according to the requirements of the manual. Unless specifically authorized in a separate writing by Seller, Seller makes no warranty with respect to, and shall have no liability in connection with, goods which are incorporated into other products or equipment, or which are modified by any person other than Seller.

The foregoing is **IN LIEU OF** all other warranties and is subject to the LIMITATIONS stated herein. **NO OTHER EXPRESS OR IMPLIED WARRANTY OF FITNESS FOR PARTICULAR PURPOSE OR MERCHANTABILITY IS MADE. WITH RESPECT TO SELLER'S BREACH OF THE IMPLIED WARRANTY AGAINST INFRINGEMENT, SAID WARRANTY IS LIMITED TO CLAIMS OF DIRECT INFRINGEMENT AND EXCLUDES CLAIMS OF CONTRIBUTORY OR INDUCED INFRINGEMENTS. BUYER'S EXCLUSIVE REMEDY SHALL BE THE RETURN OF THE PURCHASE PRICE DISCOUNTED FOR REASONABLE WEAR AND TEAR OR AT SELLER'S OPTION REPLACEMENT OF THE GOODS WITH NON-INFRINGEMENTS.**

TO THE EXTENT PERMITTED BY LAW, THE EXCLUSIVE REMEDY OF THE USER OR BUYER, AND THE LIMIT OF SELLER'S LIABILITY FOR ANY AND ALL LOSSES, INJURIES, OR DAMAGES CONCERNING THE GOODS (INCLUDING CLAIMS BASED ON CONTRACT, NEGLIGENCE, TORT, STRICT LIABILITY OR OTHERWISE) SHALL BE THE RETURN OF GOODS TO SELLER AND THE REFUND OF THE PURCHASE PRICE, OR, AT THE OPTION OF SELLER, THE REPAIR OR REPLACEMENT OF THE GOODS. IN THE CASE OF SOFTWARE, SELLER WILL REPAIR OR REPLACE DEFECTIVE SOFTWARE OR IF UNABLE TO DO SO, WILL REFUND THE PURCHASE PRICE OF THE SOFTWARE. IN NO EVENT SHALL SELLER BE LIABLE FOR LOST PROFITS, BUSINESS INTERRUPTION, OR ANY SPECIAL, INDIRECT, CONSEQUENTIAL OR INCIDENTAL DAMAGES. SELLER SHALL NOT BE RESPONSIBLE FOR INSTALLATION, DISMANTLING OR REINSTALLATION COSTS OR CHARGES. No Action, regardless of form, may be brought against Seller more than 12 months after a cause of action has accrued. The goods returned under warranty to Seller's factory shall be at Buyer's risk of loss, and will be returned, if at all, at Seller's risk of loss.

Buyer and all users are deemed to have accepted this LIMITATION OF WARRANTY AND LIABILITY, which contains the complete and exclusive limited warranty of Seller. This LIMITATION OF WARRANTY AND LIABILITY may not be amended, modified or its terms waived, except by writing signed by an Officer of Seller.

### Service Policy

Knowing that inoperative or defective instruments are as detrimental to TSI as they are to our customers, our service policy is designed to give prompt attention to any problems. If any malfunction is discovered, please contact your nearest sales office or representative, or call TSI's Customer Service department at 1-800-874-2811 (USA) or +001 (651) 490-2811 (International).